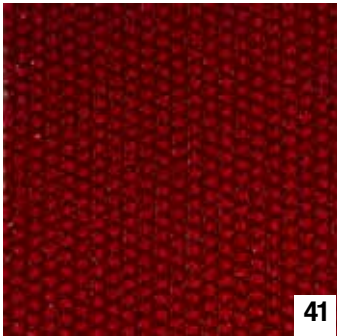


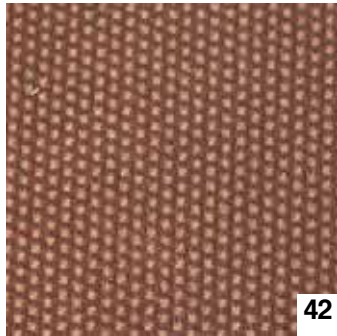
# Mercado Medic's fabrics



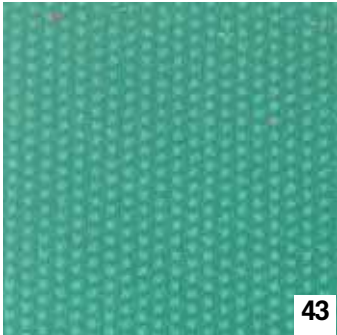
# Plush & Skai



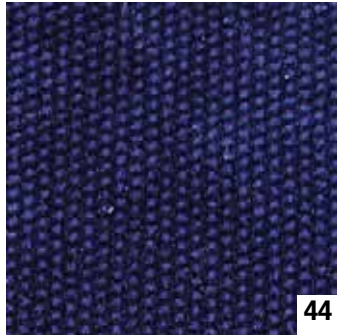
41



42



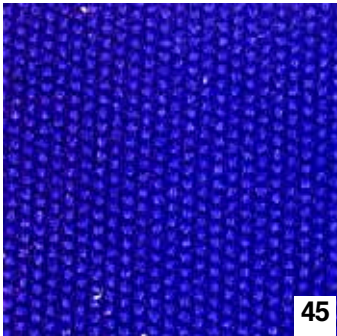
43



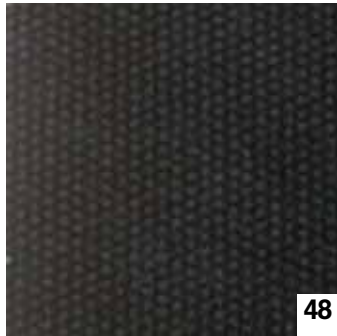
44



46



45



48

**Plush**

41 wine red 42 brown 43 green 44 marine blue  
45 realblue 46 grey 58 black

**Skai**

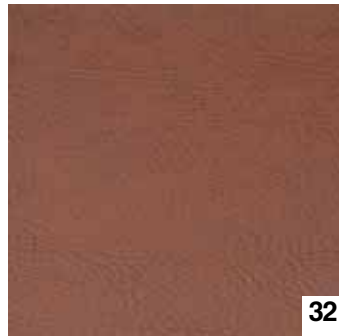
31 red 32 brown 35 blue 36 grey  
38 black



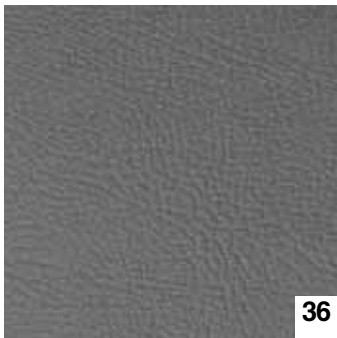
35



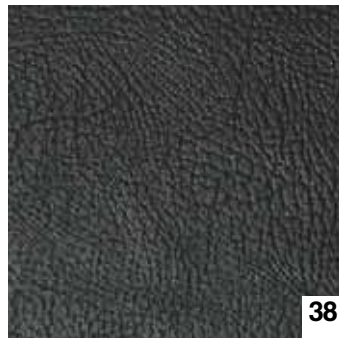
31



32



36

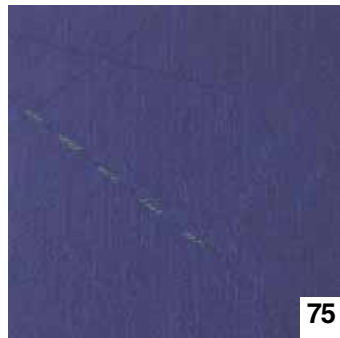


38

# Patterned fabric & alternatives



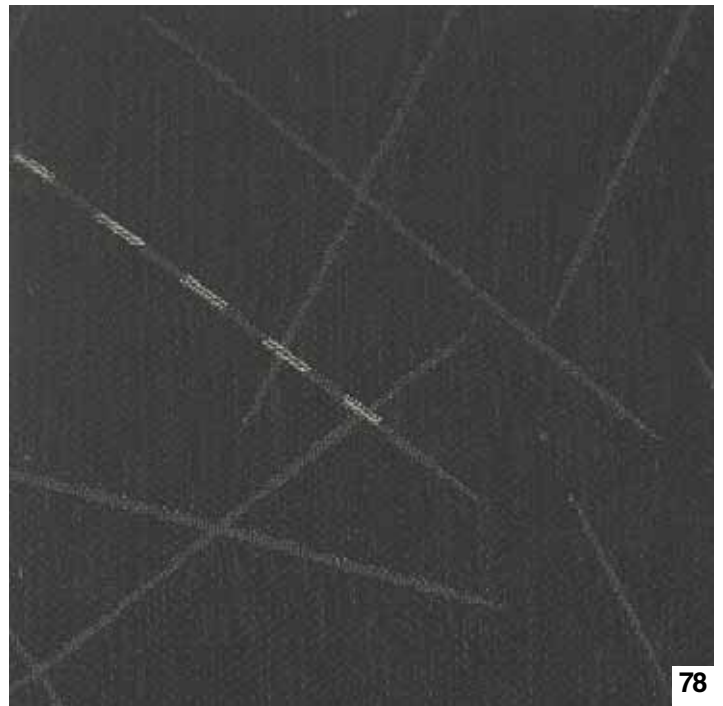
71



75

## Patterned fabric "adult"

71 red 75 blue 78 black



78



85



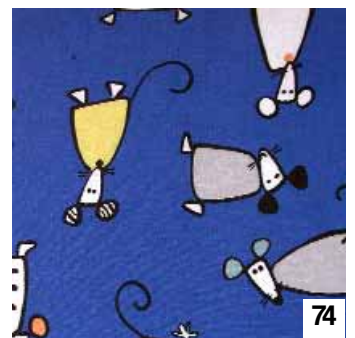
81



89



73



74

## Patterned fabric "child"

81 red 85 blue 89 yellow

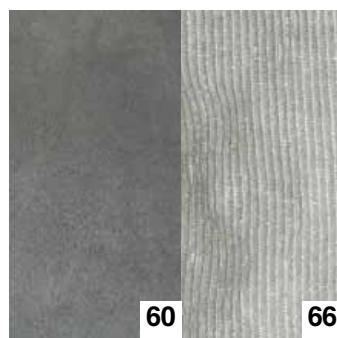
## Alternative cotton covers

73 Child/yellow 74 Child/Blue

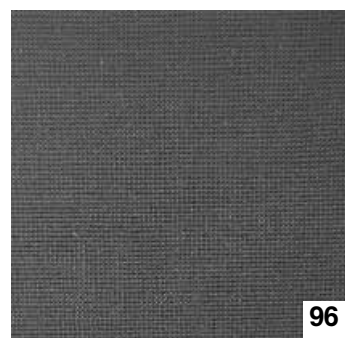
66 Incontinence cover, grey

## Upholstery

60 Incontinence, grey 96 ESD antistatic.



60



96



Mercado Medic AB  
Box 1074  
181 22 Lidingö  
Sweden

Tel: +46-(0)-8 555 143 00  
Fax: +46-(0)-8 555 143 99  
E-mail: [info@mercado.se](mailto:info@mercado.se)

Mercado Medic Export Office:  
Nobelweg 22  
3899 BN Zeewolde  
The Netherlands

Tel: +31-(0)-36 521 99 95  
Fax: +31-(0)-36 521 99 90  
E-mail: [export@mercado.se](mailto:export@mercado.se)